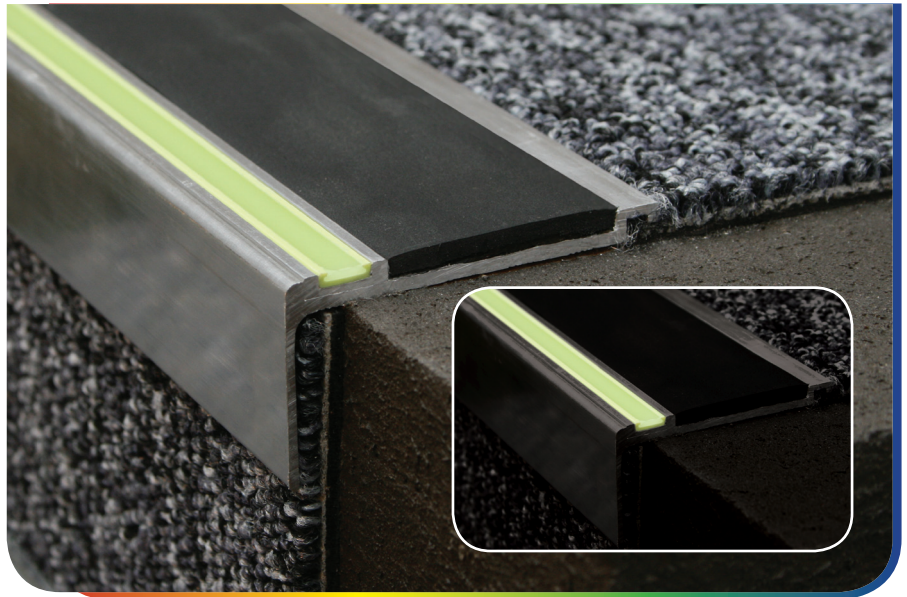


Technical Datasheet - Stair Nosing

Aluminator™ Heavy Duty Nosings

Product Description

In addition to the function of step edge protection the Aluminator™ range offers an easy, energy efficient solution to illuminate steps. Should a local or emergency power failure occur on stairways, increasing the risk of hazard for evacuees, the Aluminator™ system allows the evacuee to orientate, locate stair edges and risers, and to assist in the safe evacuation of the premises. The system requires no electrical connection, is simple to install and requires no special maintenance other than that which you would normally carry out on any similar product. Only normal illumination, daylight, fluorescent or standard tungsten filaments are required to activate its performance. The highly durable and slip resistant silicone carbide is suitable for external use, ideal for both commercial and domestic applications where public safety is paramount. The diverse range can be used on a wide variety of substrates such as concrete, timber, tiles, vinyl, steel and checker plate with inserts available in a wide array of colours promoting the visibility while complementing the aesthetics.

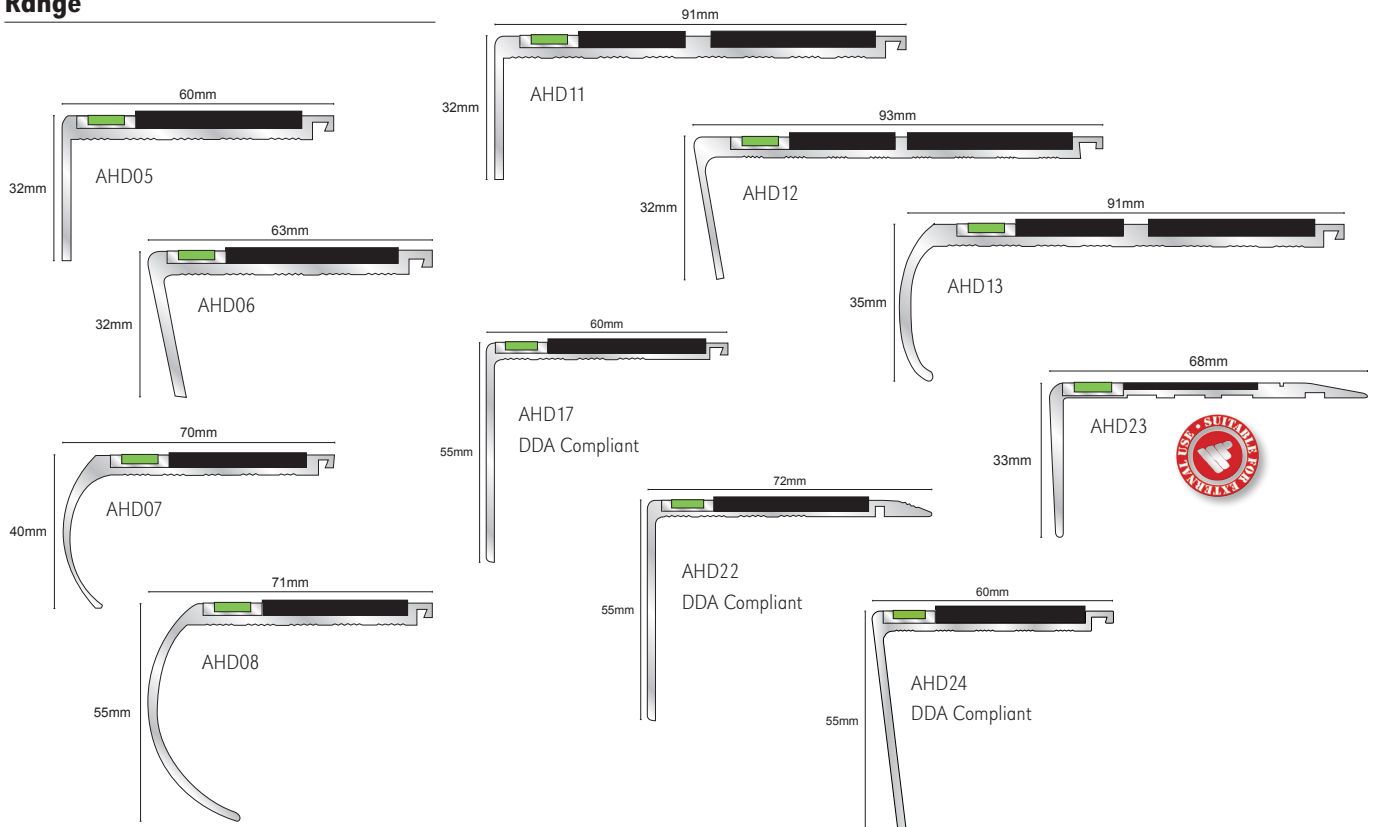


Dimensions and Colour

Stock Lengths are available in 2.46m, 2.77m and 3.22m with a selection of Non Slip PVC insert colours - see nosing colour charts for availability.

Profiles can be anodised and cut to length upon request.

Range



Genesis
For the Perfect Finish

Technical Datasheet - Stair Nosing

Technical Details

Aluminium

Chemical composition: In accordance with BS EN 573-3:2003 Aluminium and aluminium alloys. The trace elements of the composition which determine the alloy selected are 6063 Thermal Treatment designations: T6. To the best of our knowledge the best in the market. Manufacturing Tolerance: In accordance with BS EN 755

PVC Insert

A filled flexible PVC extrusion grade specially designed for non-scurf stair nosing applications with good anti-slip properties; to our knowledge our inserts achieve the best slip resistance results in the market.

Physical properties: Mechanical performance in accordance with BS2782: Method 320A Physical properties: Softness, cold flex & cold bend: In accordance with BS2782:

Physical properties: Water absorption: In accordance with BS2782: Method 430A

Slip resistance Properties: In accordance with BD6677: Part 1:1986 and in accordance with "The measurement of floor slip resistance: Guidelines recommended by the UK Slip Resistance Group: Issue 2 June 2000"

Wear Resistance: Abrasion resistance: In accordance with BS en 660-2:1999

LRV Table

| GENESIS INSERT COLOUR | LRV |
|-----------------------|------|
| BLACK | 4.5 |
| GREEN | 6.3 |
| BROWN | 9.1 |
| COBALT BLUE | 9.2 |
| RED | 10.6 |
| SKY BLUE | 13.5 |
| MIDNIGHT GREY | 12.8 |
| DOLPHIN GREY | 27.6 |
| BEIGE | 41.1 |
| ICE GREY | 42.1 |
| CANVAS | 53.2 |
| YELLOW | 55.7 |
| WHITE | 79.9 |

Maintenance

Inserts: All inserts should be cleaned using a neutral detergent and thoroughly rinsed with clean water. Ensure all inserts are dry prior to receiving foot traffic.

Aluminium Channel: These can be polished using steel wool or cloth to maintain the appearance - under no circumstances should solvent cleaners be utilised in cleaning or maintaining Genesis Aluminium Products.

Installation

1. Ensure the steps are dry, clean, free of debris, level and even.
2. If Predrilled use the drill holes to mark steps for drilling location.
3. Drill and Plug the steps.
4. Apply suitable adhesive to the underside of the nosing and apply nosing to the step.
5. Screw down the step with the appropriate size screws.
6. Apply insert (if separate) or insert pip to cover the screw head.

Aluminium Extrusion Standard

(DIN) EN 755 1994/1997 ; Aluminium and aluminium alloys. Alloy: 6063 Temper: T5

Silicon Carbide Anti Slip Test (Passed High Slip Resistance)

Australian Standard; AS/NZS 4586:2004 Slip resistance classification of new pedestrian surface materials, Appendix A: WET Pendulum (Four S slider): Mean BPN: 73 V[HIGH*]

Australian Standard; AS/NZS 4586:2004 Slip resistance classification of new pedestrian surface materials, Appendix D: OIL-WET Ramp Mean overall acceptance and: 38.1° R 13 [HIGH*]

*CSIRIO has categorised the AS4586 classifications into sub-groups Low, Medium and High

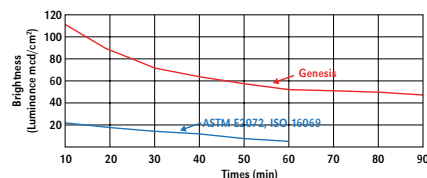
Photoluminescent Strip Test

Wear Resistance passed 300 cycles; ISO 9352 1995 Plastics - Determination of resistance to wear by abrasive wheel Abrasive wheel CS10, Load 1000 gram, speed 60 rpm.

Illuminant Test; ASTM E 2073-07 Standard Test Method for Photonic

Luminance of Photoluminescent (Phosphorescent) Charging Time

(4000-4500 K, 21.6 Lux) = 120 min, shown the decay curve following:



Photoluminescent charge by fluorescent (20 lux*, 4100K)

| Activation Time | Hours of Visibility |
|-----------------|---------------------|
| 5 minutes | 36 minutes |
| 10 minutes | 1 hour 15 minutes |
| 20 minutes | 2 hours 16 minutes |
| 30 minutes | 2 hours 50 minutes |

Photoluminescent charge by fluorescent (150 lux*, 4100K)

| Activation Time | Hours of Visibility |
|-----------------|---------------------|
| 5 minutes | 2 hours 30 minutes |
| 10 minutes | 4 hours 31 minutes |
| 20 minutes | 6 hours 15 minutes |
| 30 minutes | 7 hours 45 minutes |

Photoluminescent charge by fluorescent (300 lux*, 4100K)

| Activation Time | Hours of Visibility |
|-----------------|---------------------|
| 5 minutes | 4 hours 22 minutes |
| 10 minutes | 5 hours 45 minutes |
| 20 minutes | 7 hours 3 minutes |
| 30 minutes | 8 hours 35 minutes |

* A luminance level of 5 millicandelas per square metre is defined as visible

Some practical examples

| | |
|--|-------------|
| Summer, at noon, under a cloudless sky | 100,000 lux |
| Ditto, but in the shade | 10,000 lux |
| In the open under a heavily-overcast sky | 5,000 lux |
| Artificial light, in a well-lit office | 1,000 lux |
| Artificial light, average living room | 100 lux |
| Street lighting | 5-30 lux |

P.V.C. Trim • Stair Nosings • Expansion Joints • Transitions • Seals • Edge Protection • Metal Trim • Skirting • Tools

Tel: +44 (0)1642 713000

Email: info@genesis-gs.com

www.genesis-gs.com

UK Head Office & Factory
Stokesley Business Park Stokesley
North Yorkshire TS9 5JZ UK



Genesis
For the Perfect Finish

